



----ENEMALTA DPS IPPC APPLICATION - FORM C----

APPENDIX A - Reference Drawings

0466 – Enemalta DPS IPPC Application

***Enemalta plc.
Ing. Fredrick Azzopardi,
Central Administration Offices,
Church Wharf,
Marsa.***

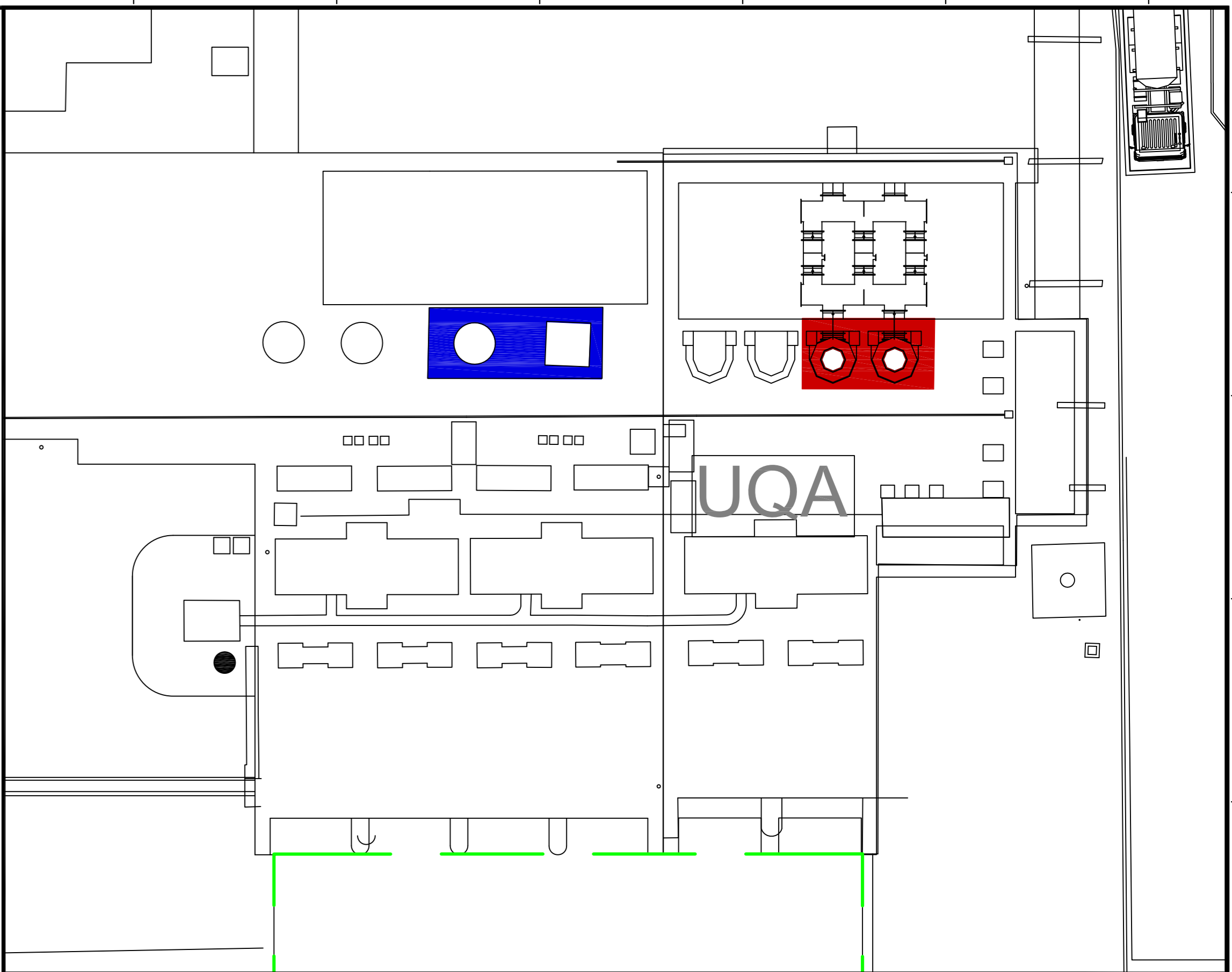
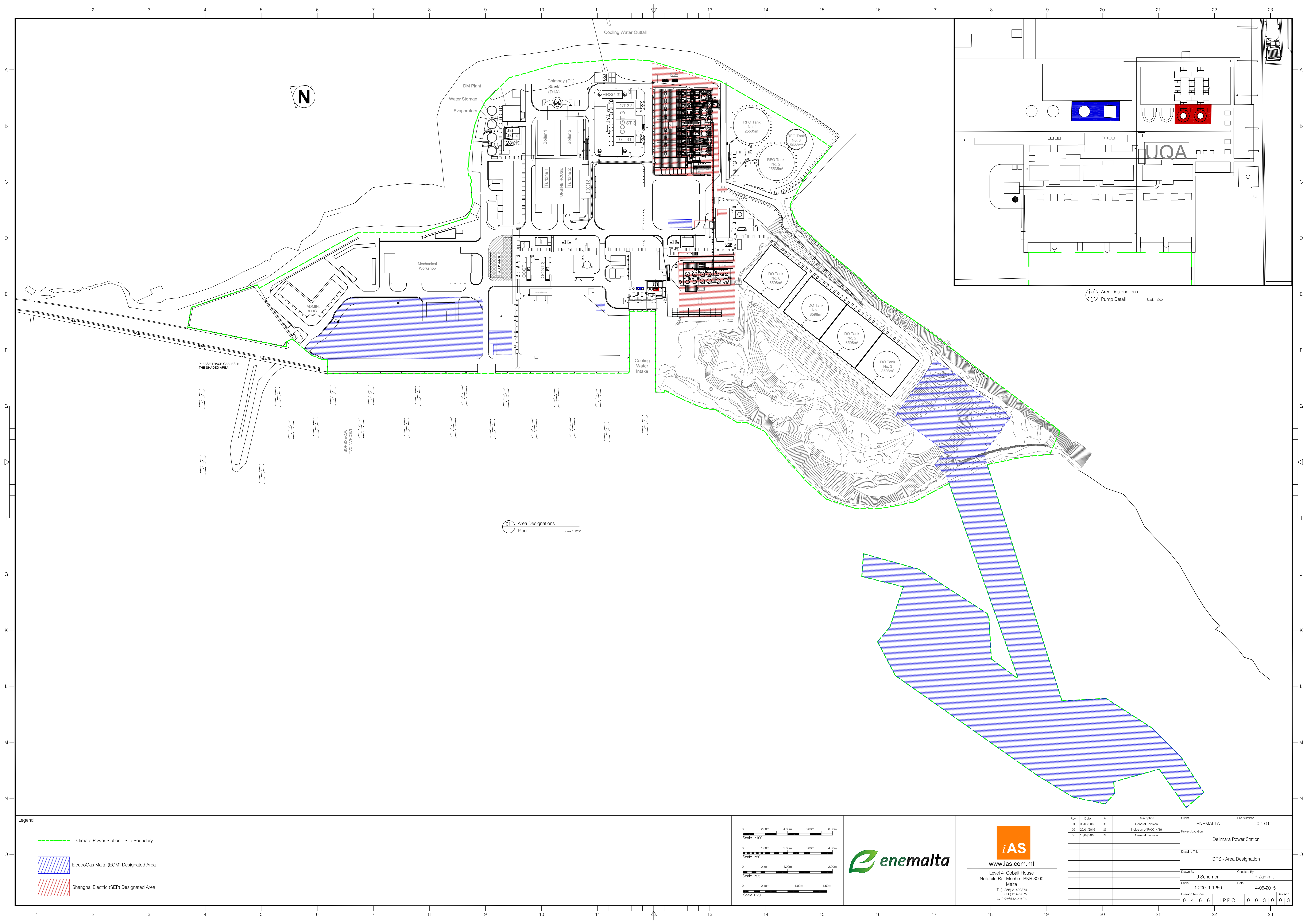
<i>Date of Version Issue</i>	<i>11/10/16</i>
------------------------------	-----------------

<i>Report Version number</i>	<i>Rev 01</i>
------------------------------	---------------

[illegible]

APPENDICES REFERENCE

Reference	Document Title
Appendix A	Reference Drawings
Appendix B	Best-Available-Technology Conclusions
Appendix C	Material Safety Data Sheets
Appendix D	Maintenance of Tank Bunds
Appendix E	Enemalta Safety Report
Appendix F	Enemalta Safety Management System
Appendix G	Enemalta Emergency Response Plan
Appendix H	Coordinated Safety Report
Appendix I	Coordinated Safety Management System
Appendix J	Coordinated Emergency Response Plan
Appendix K	Sewer Discharge Permit
Appendix L	VOC Abatement System Report
Appendix M	Enemalta DPS - Noise Monitoring Method Statement
Appendix N	DPS Noise Monitoring Reports 2014 & 2015
Appendix O	NEC Emissions Calculations Letter
Appendix P	Technically Competent Person - CV
Appendix Q	Decommissioning Plan
Appendix R	Expenditure Plan
Appendix S	EMS Documentation & ISO Certification
Appendix T	Environmental Impact Assessment

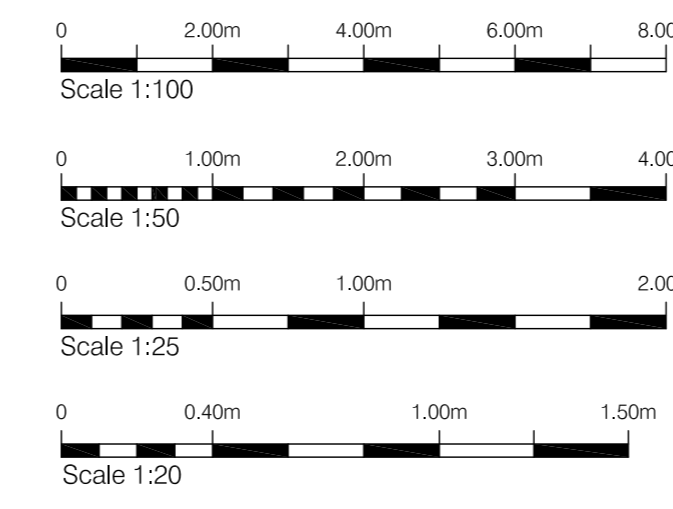


02 Area Designations
Pump Detail
Scale 1:200

01 Area Designations
Plan
Scale 1:1250

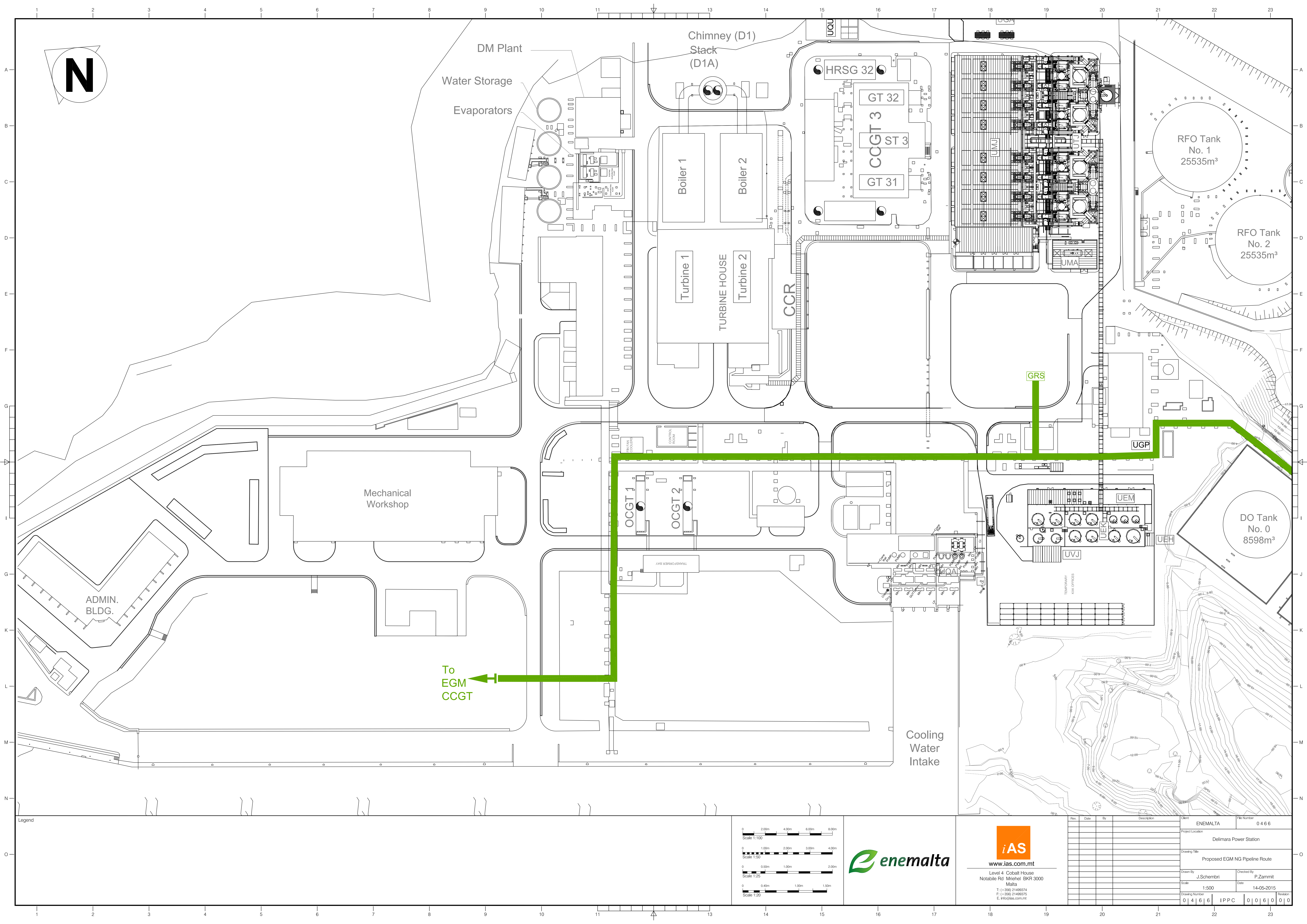
Legend

- Delimara Power Station - Site Boundary
- ElectroGas Malta (EGM) Designated Area
- Shanghai Electric (SEP) Designated Area

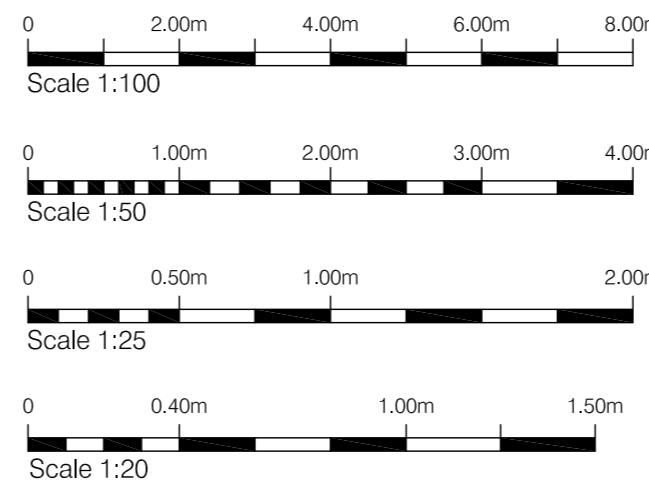


www.ias.com.mt
Level 4 Cobalt House
Notabile Rd. Mrieħel BKR 3000
Malta
T: (+356) 21449374
F: (+356) 21449375
E: info@ias.com.mt

Rev.	Date	By	Description	Client	File Number
01	08/06/2015	J.S	General Revision	ENEMALTA	0466
02	20/01/2016	J.S	Inclusion of PA0014/16		
03	18/08/2016	J.S	General Revision		
				Project Location	Delimara Power Station
				Drawing Title	DPS - Area Designation
				Drawn By	J.Schembri
				Checked By	P.Zammit
				Scale	1:200, 1:1250
				Date	14-05-2015
				Drawing Number	0466 IPPC 003003

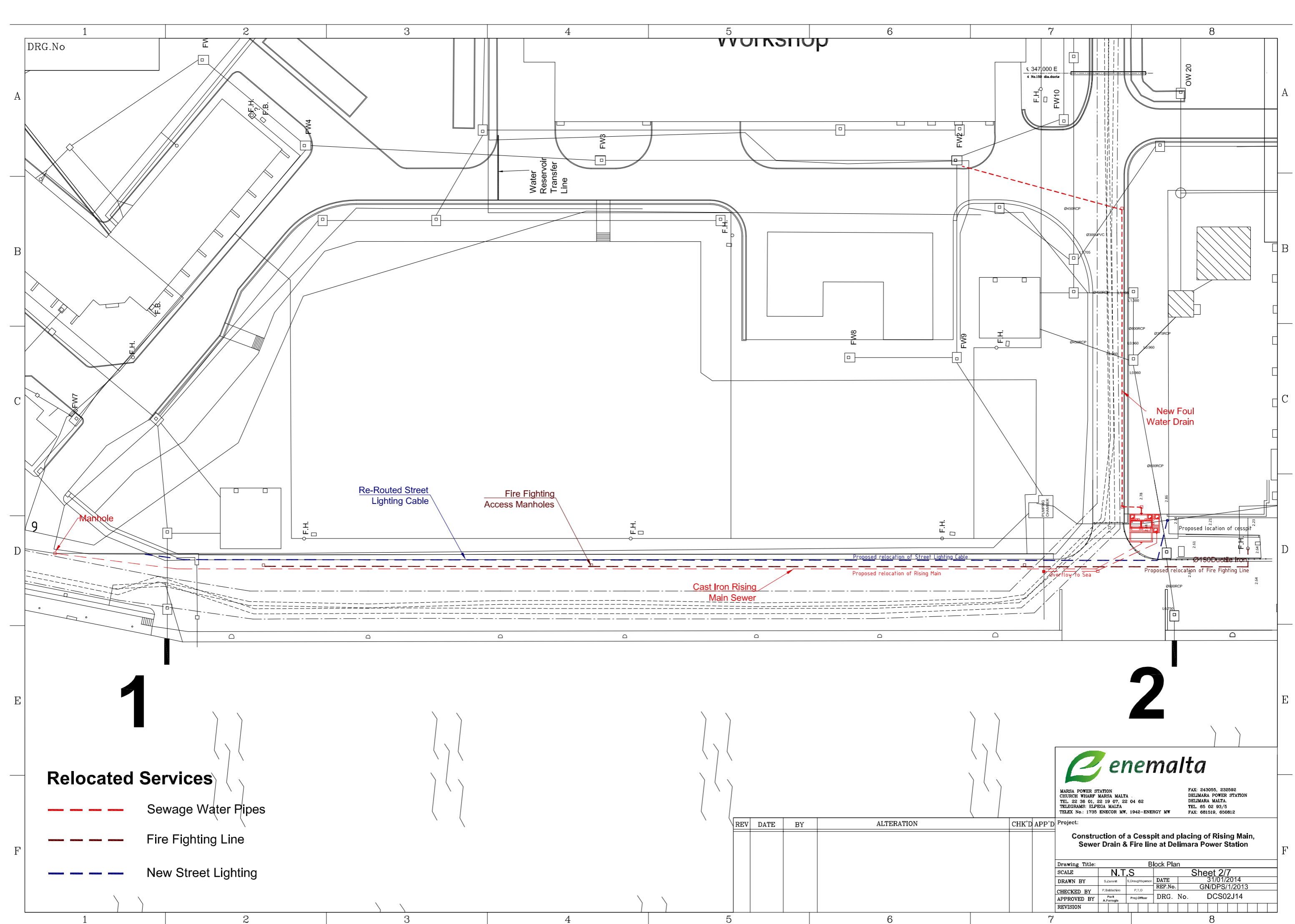


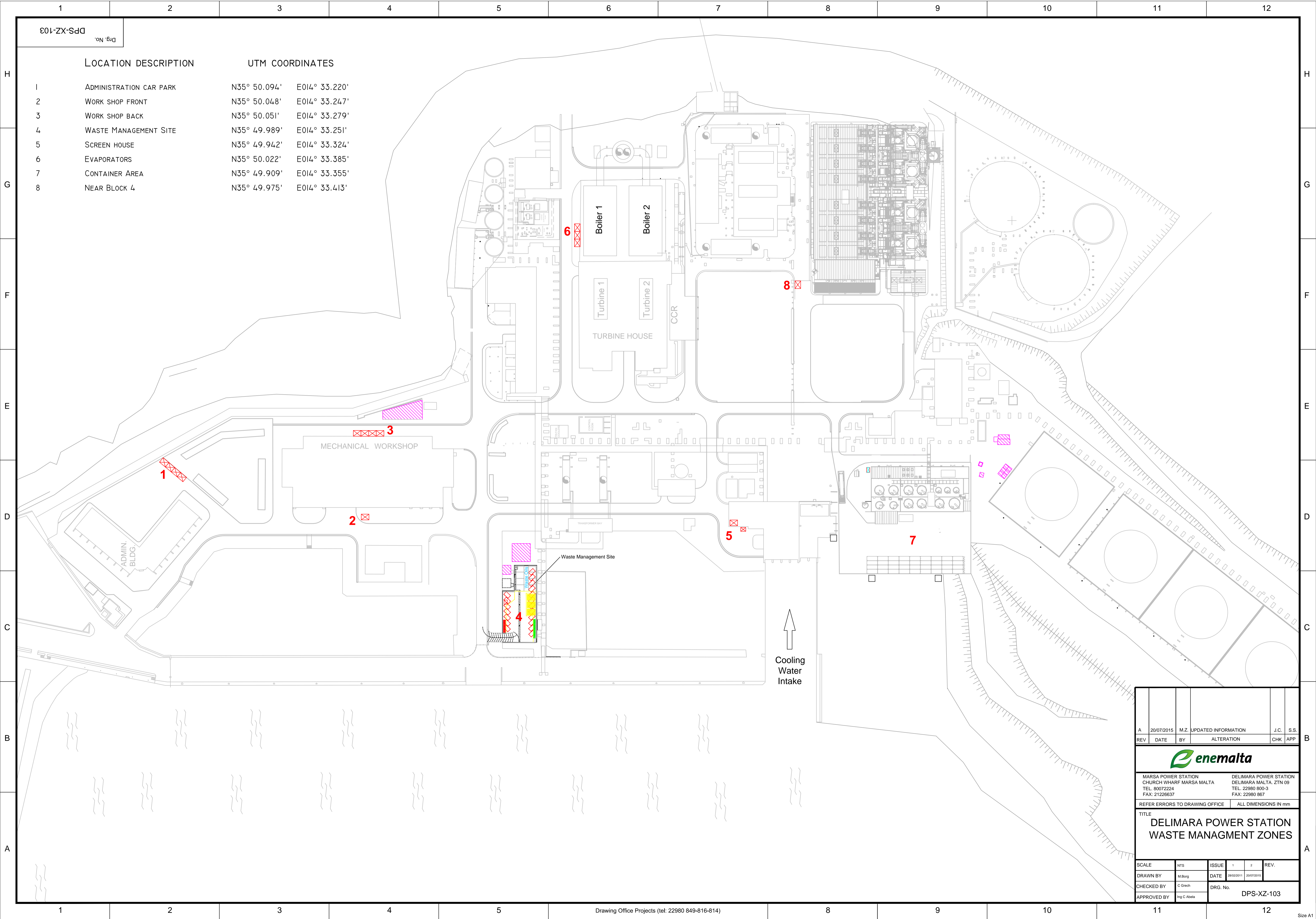
Legend



www.ias.com.mt
Level 4, Cobalt House
Notabile Rd, Mriehel BKR 3000
Malta
T: (+356) 21499374
F: (+356) 21499375
E: info@ias.com.mt

Rev	Date	By	Description	Client	File Number
				ENEMALTA	0466
Project Location					
Delimara Power Station					
Drawing Title					
Proposed EGM NG Pipeline Route					
Drawn By			Checked By		
J. Schembri			P. Zammit		
Scale			Date		
1:500			14-05-2015		
Drawing Number			Revision		
0466			IPPC	006000	





UTM COORDINATES

1	ADMINISTRATION CAR PARK	N35° 50.094'	E014° 33.220'
2	WORK SHOP FRONT	N35° 50.048'	E014° 33.247'
3	WORK SHOP BACK	N35° 50.051'	E014° 33.279'
4	PROPOSED WASTE MANAGEMENT SITE	N35° 49.947'	E014° 33.356'
5	SCREEN HOUSE	N35° 49.942'	E014° 33.324'
6	EVAPORATORS	N35° 50.022'	E014° 33.385'
7	CONTAINER AREA	N35° 49.909'	E014° 33.355'
8	NEAR BLOCK 4	N35° 49.975'	E014° 33.413'



B	07/10/2016	G.M.	ADDED NEW ENEMALTA WASTE MANAGEMENT AREA & CHANGED TITLE OF DRAWING.	J.Z.	J.Z.
A	20/07/2015	M.Z.	UPDATED INFORMATION	J.C.	S.S.
REV	DATE	BY	ALTERATION	CHK	APP

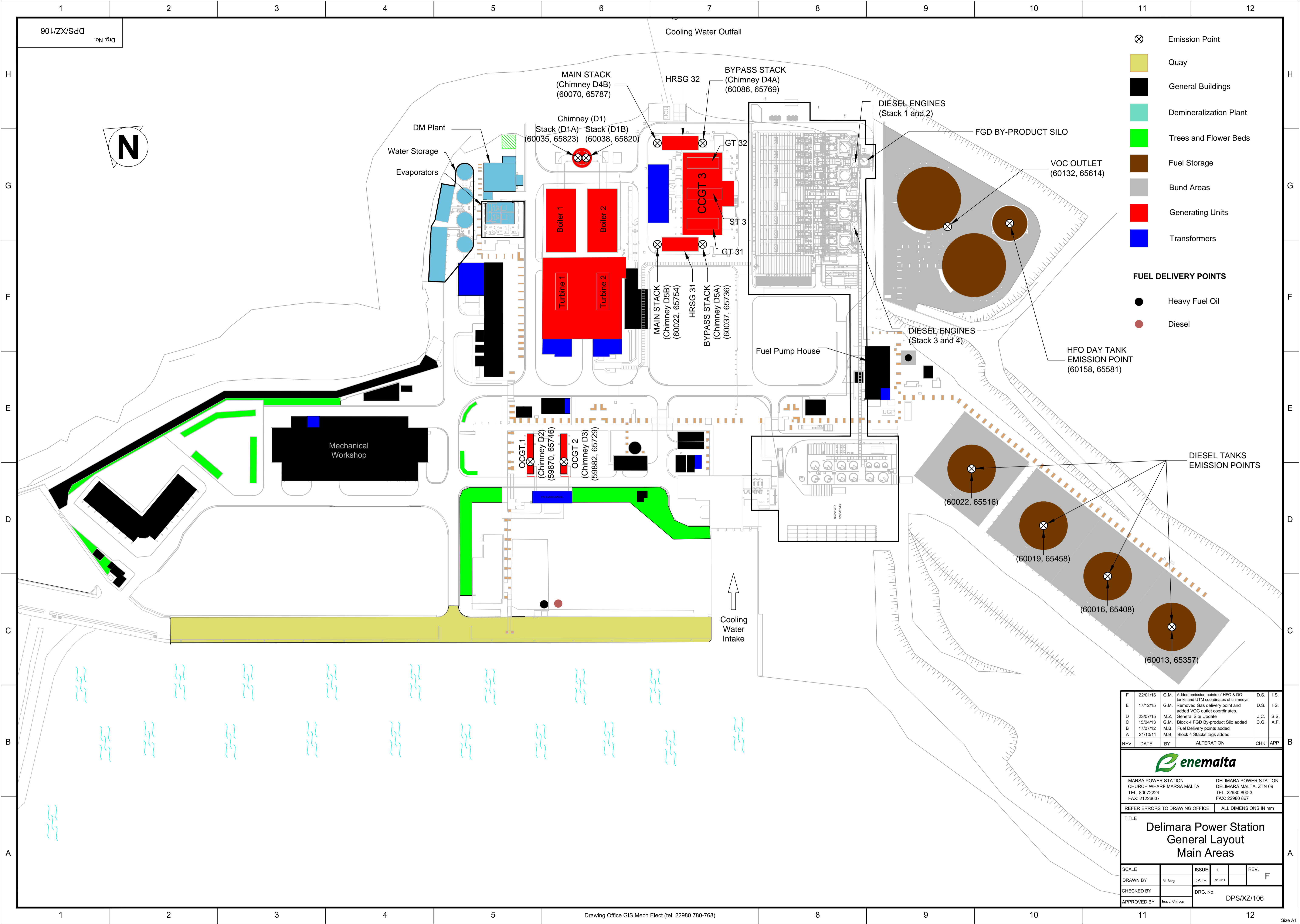


MARSA POWER STATION CHURCH WHARF MARSA MALTA TEL. 80072224 FAX: 21226637	DELIMARA POWER STATION DELIMARA MALTA. ZTN 09 TEL. 22980 800-3 FAX: 22980 867
---	--


REFER ERRORS TO DRAWING OFFICE	ALL DIMENSIONS IN mm
--------------------------------	----------------------

TITLE
DELIMARA POWER STATION
NEW ENEMALTA WASTE
MANAGEMENT AREA

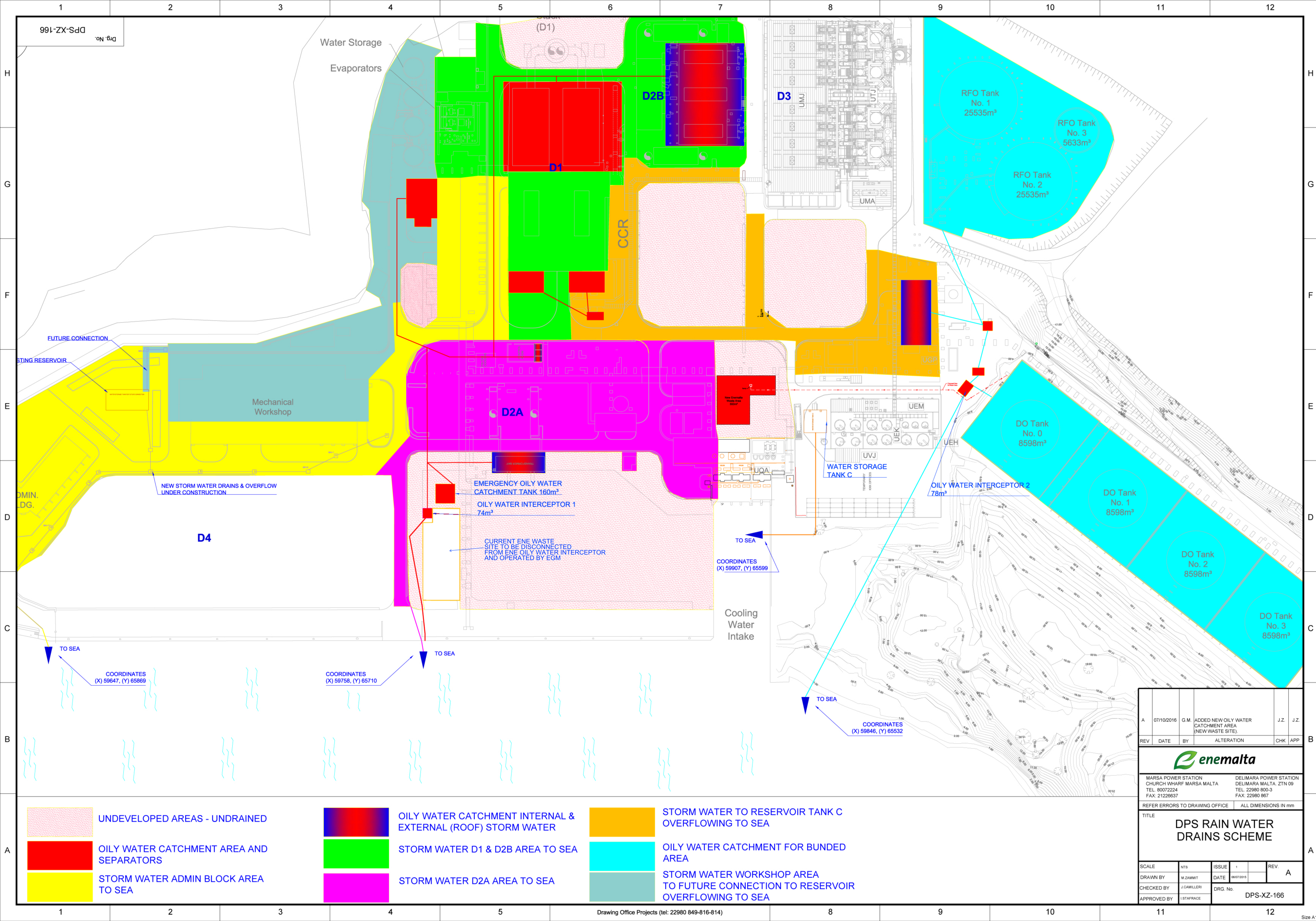
SCALE	NTS	ISSUE	1	2	REV.	B
DRAWN BY	M.Boig	DATE	28/02/2011	20/07/2015		
CHECKED BY	C Grech	DRG. No. DPS-XZ-103				
APPROVED BY	Ing C Abela					

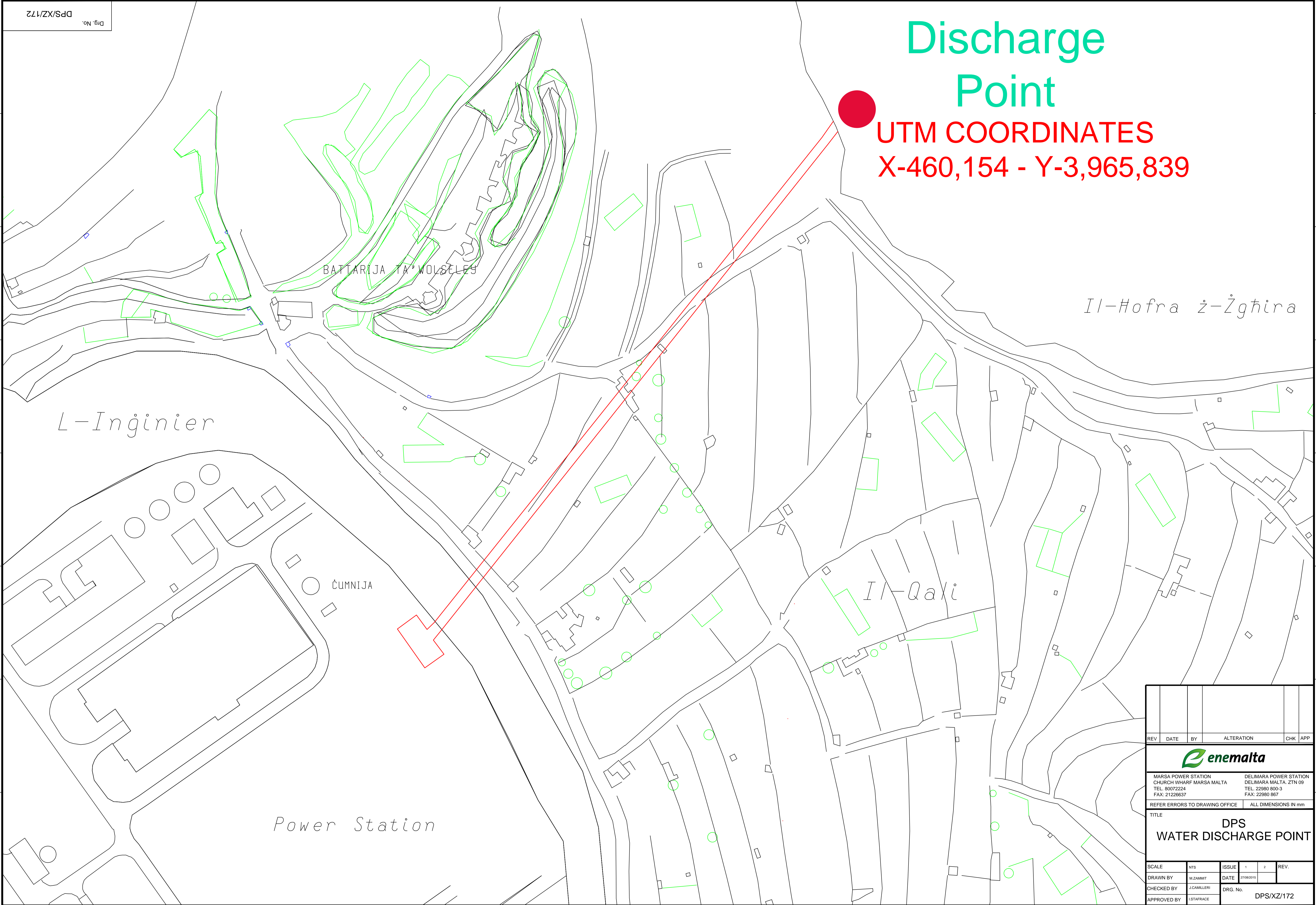


F	22/01/16	G.M.	Added emission points of HFO & DO tanks and UTM coordinates of chimneys.	D.S.	I.S.
E	17/12/15	G.M.	Removed Gas delivery point and added VOC outlet coordinates.	D.S.	I.S.
D	23/07/15	M.Z.	General Site Update	J.C.	S.S.
C	15/04/13	G.M.	Block 4 FGD By-product Silo added	C.G.	A.F.
B	17/07/12	M.B.	Fuel Delivery points added		
A	21/10/11	M.B.	Block 4 Stacks tags added		
REV	DATE	BY	ALTERATION	CHK	APP

					
MARSA POWER STATION CHURCH WHARF MARSA MALTA TEL: 80072224 FAX: 21226637			DELIMARA POWER STATION DELIMARA MALTA, ZTN 09 TEL: 22980 800-3 FAX: 22980 867		
REFER ERRORS TO DRAWING OFFICE			ALL DIMENSIONS IN mm		
TITLE Delimara Power Station General Layout Main Areas					

SCALE				ISSUE	1		REV.	F
DRAWN BY		M. Borg		DATE	09/05/11			
CHECKED BY				DRG. No.		DPS/XZ/106		
APPROVED BY		Ing. J. Chiroop						





Drg. No.
DPS/XZ/172

Discharge Point

UTM COORDINATES
X-460,154 - Y-3,965,839

BATTARIJA TA' MUSELES


L-Inġinier

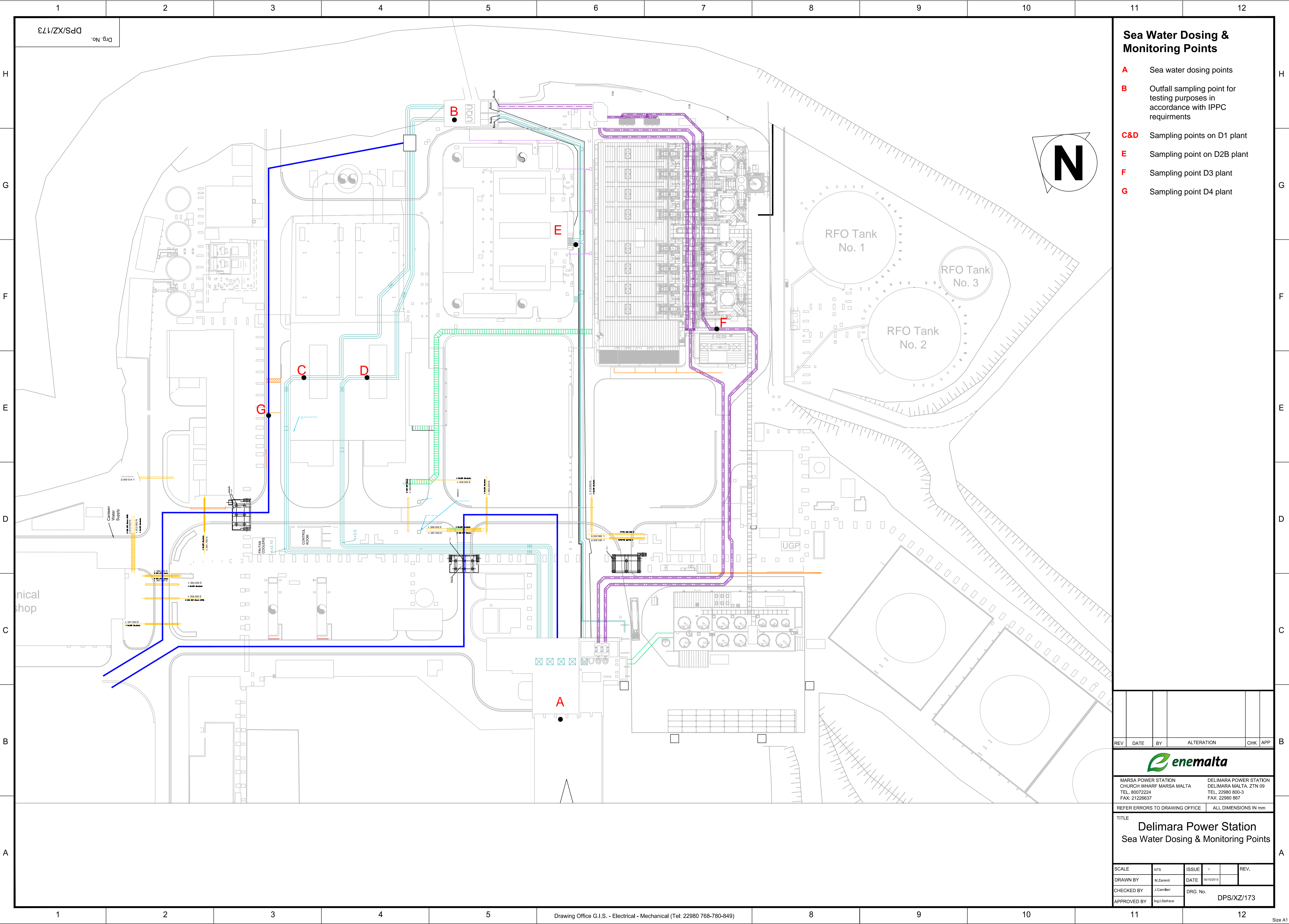
Il-Hofra ż-Żgħira

Il-Qaxi

ĊUMNIJA

Power Station

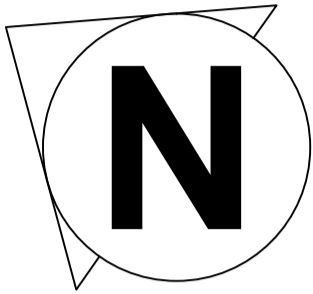
REV	DATE	BY	ALTERATION	CHK	APP	
						
MARSA POWER STATION CHURCH WHARF MARSA MALTA TEL: 80072224 FAX: 21226637			DELIMARA POWER STATION DELIMARA MALTA. ZTN 09 TEL: 22980 800-3 FAX: 22980 867			
REFER ERRORS TO DRAWING OFFICE			ALL DIMENSIONS IN mm			
TITLE						
DPS WATER DISCHARGE POINT						
SCALE	NTS		ISSUE	1	2	REV.
DRAWN BY	M.ZAMMIT		DATE	27/08/2015		
CHECKED BY	J.CAMILLERI		DRG. No. DPS/XZ/172			
APPROVED BY	L.SAFRANCE					




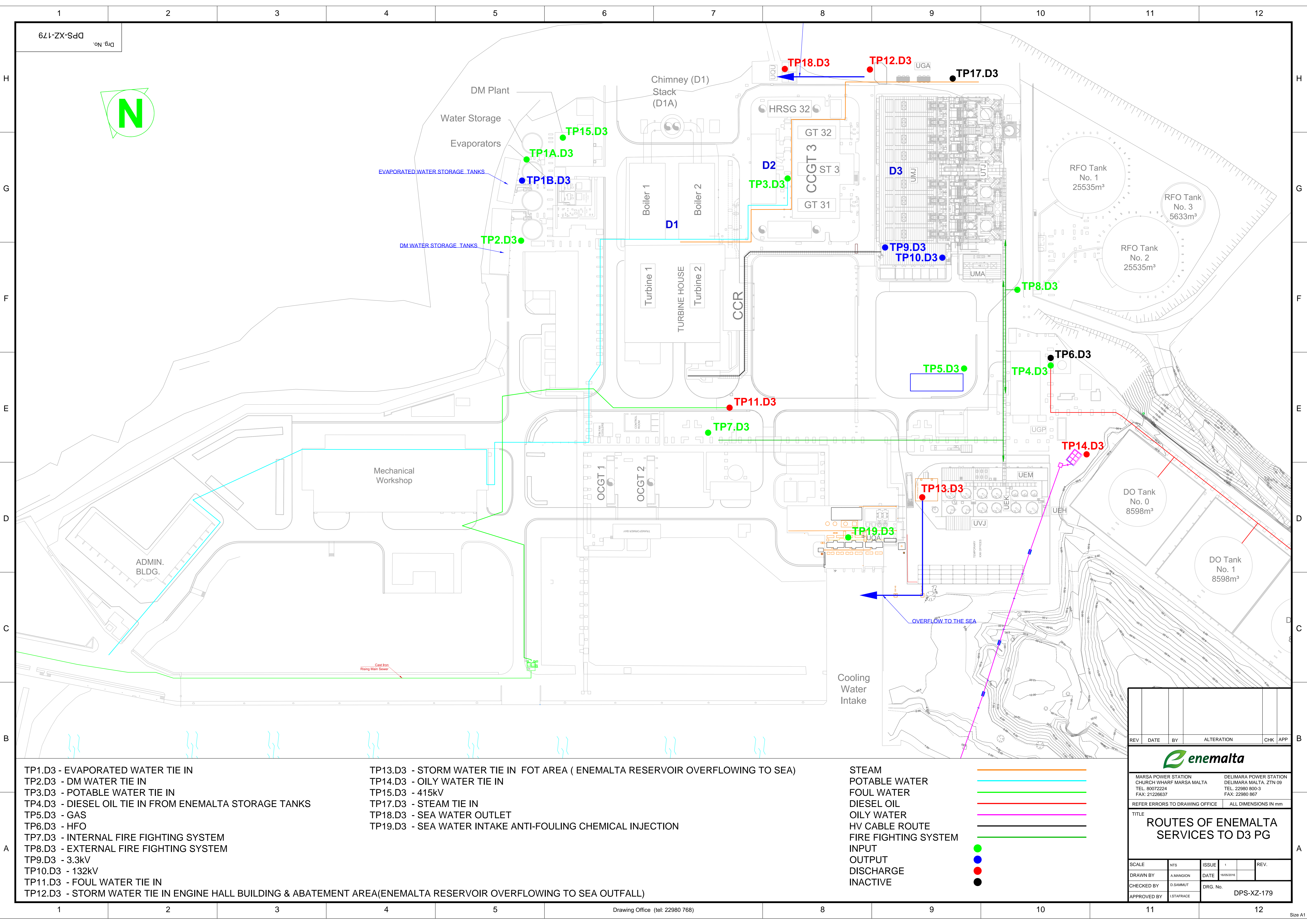
Drg. No.
DPS/XZ/173

Sea Water Dosing & Monitoring Points

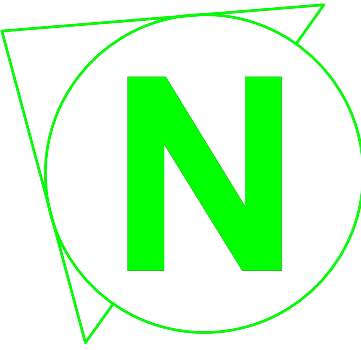
- A** Sea water dosing points
- B** Outfall sampling point for testing purposes in accordance with IPPC requirments
- C&D** Sampling points on D1 plant
- E** Sampling point on D2B plant
- F** Sampling point D3 plant
- G** Sampling point D4 plant



REV	DATE	BY	ALTERATION		CHK	APP
<div></div>						
MARSA POWER STATION CHURCH WHARF MARSA MALTA TEL: 80072224 FAX: 21226637			DELIMARA POWER STATION DELIMARA MALTA, ZTN 09 TEL: 22980 800-3 FAX: 22980 867			
REFER ERRORS TO DRAWING OFFICE			ALL DIMENSIONS IN mm			
TITLE <div>Delimara Power Station</div> <div>Sea Water Dosing & Monitoring Points</div>						
SCALE	NTS		ISSUE	1	REV.	
DRAWN BY	M.Zammit		DATE	05/10/2015		
CHECKED BY	J.Camilleri		DRG. No.	DPS/XZ/173		
APPROVED BY	Ing.J.Stafrace					



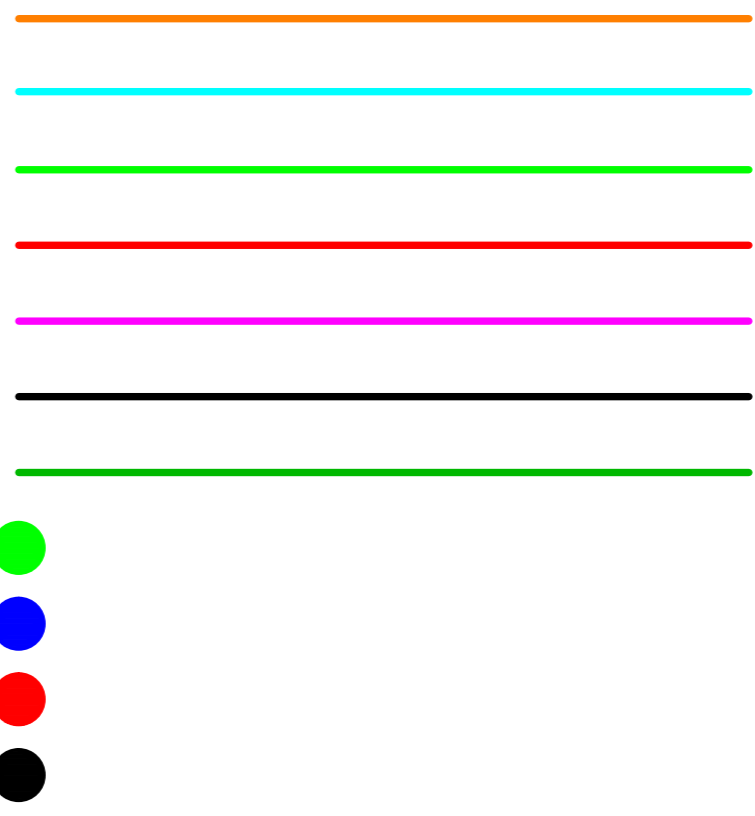
Drg. No. DPS-XZ-179




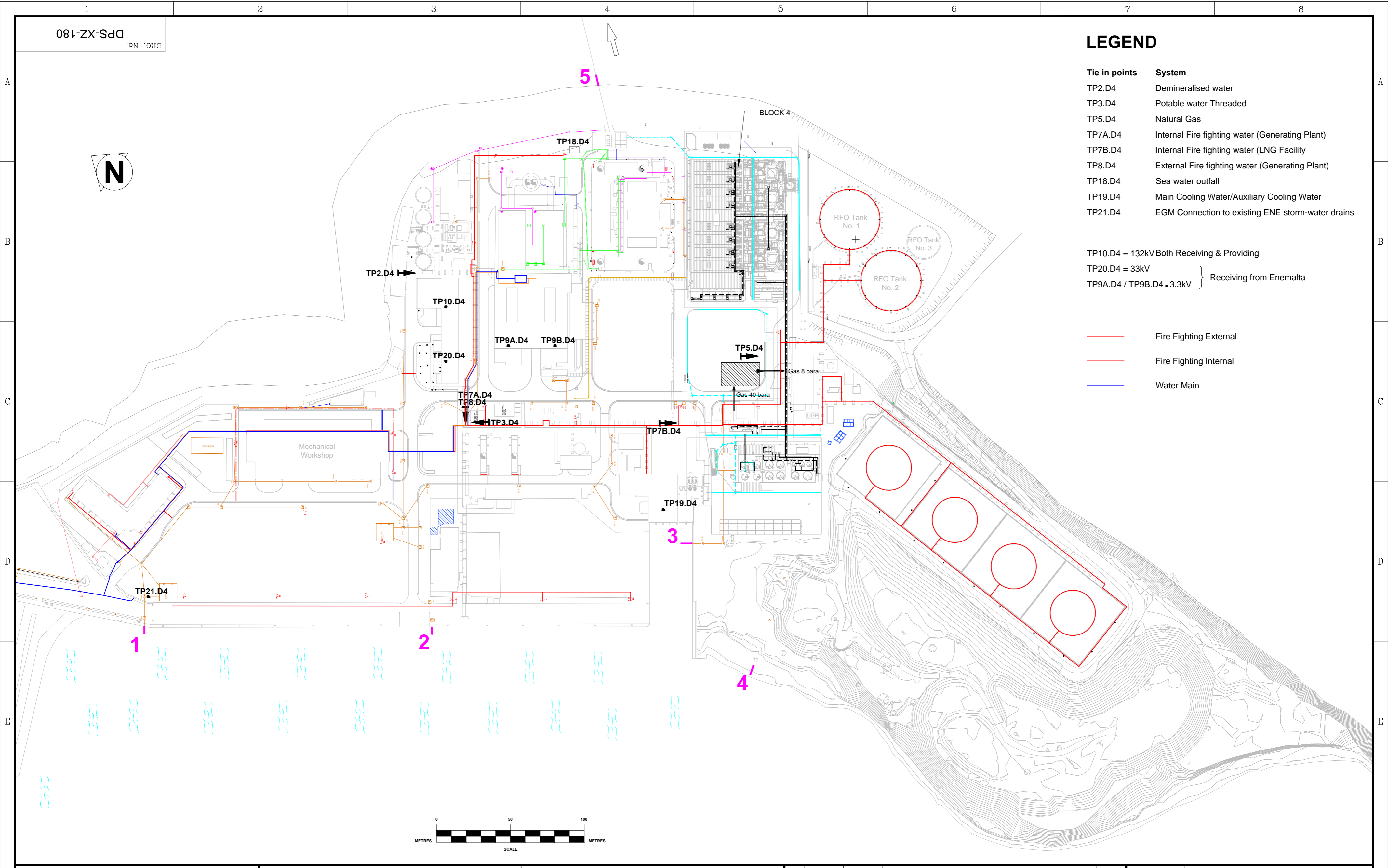
- TP1.D3 - EVAPORATED WATER TIE IN
- TP2.D3 - DM WATER TIE IN
- TP3.D3 - POTABLE WATER TIE IN
- TP4.D3 - DIESEL OIL TIE IN FROM ENEMALTA STORAGE TANKS
- TP5.D3 - GAS
- TP6.D3 - HFO
- TP7.D3 - INTERNAL FIRE FIGHTING SYSTEM
- TP8.D3 - EXTERNAL FIRE FIGHTING SYSTEM
- TP9.D3 - 3.3kV
- TP10.D3 - 132kV
- TP11.D3 - FOUL WATER TIE IN
- TP12.D3 - STORM WATER TIE IN ENGINE HALL BUILDING & ABATEMENT AREA(ENEMALTA RESERVOIR OVERFLOWING TO SEA OUTFALL)

- TP13.D3 - STORM WATER TIE IN FOT AREA (ENEMALTA RESERVOIR OVERFLOWING TO SEA)
- TP14.D3 - OILY WATER TIE IN
- TP15.D3 - 415kV
- TP17.D3 - STEAM TIE IN
- TP18.D3 - SEA WATER OUTLET
- TP19.D3 - SEA WATER INTAKE ANTI-FOULING CHEMICAL INJECTION

- STEAM
- POTABLE WATER
- FOUL WATER
- DIESEL OIL
- OILY WATER
- HV CABLE ROUTE
- FIRE FIGHTING SYSTEM
- INPUT
- OUTPUT
- DISCHARGE
- INACTIVE



REV	DATE	BY	ALTERATION	CHK	APP
<div></div> <div>MARSA POWER STATION CHURCH WHARF MARSA MALTA TEL: 80072224 FAX: 21226637</div> <div>DELIMARA POWER STATION DELIMARA MALTA, ZTN 09 TEL: 22980 800-3 FAX: 22980 867</div>					
REFER ERRORS TO DRAWING OFFICE			ALL DIMENSIONS IN mm		
TITLE					
ROUTES OF ENEMALTA SERVICES TO D3 PG					
SCALE	NTS		ISSUE	1	REV.
DRAWN BY	A.MANGION		DATE	16/05/2016	
CHECKED BY	D.SAMMUT		DRG. No.		
APPROVED BY	I.SAFRACE		DPS-XZ-179		



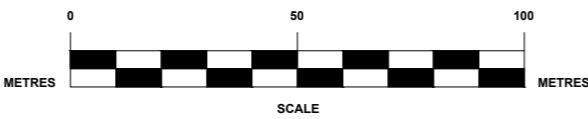
LEGEND

Tie in points	System
TP2.D4	Demineralised water
TP3.D4	Potable water Threaded
TP5.D4	Natural Gas
TP7A.D4	Internal Fire fighting water (Generating Plant)
TP7B.D4	Internal Fire fighting water (LNG Facility)
TP8.D4	External Fire fighting water (Generating Plant)
TP18.D4	Sea water outfall
TP19.D4	Main Cooling Water/Auxiliary Cooling Water
TP21.D4	EGM Connection to existing ENE storm-water drains

TP10.D4 = 132kV Both Receiving & Providing
TP20.D4 = 33kV
TP9A.D4 / TP9B.D4 = 3.3kV } Receiving from Enemalta

<div></div>	Fire Fighting External
<div></div>	Fire Fighting Internal
<div></div>	Water Main

DRG. No. DPS-XZ-180



MARSA POWER STATION
CHURCH WHARF MARSA MALTA
TEL: 80072224
FAX: 21226637

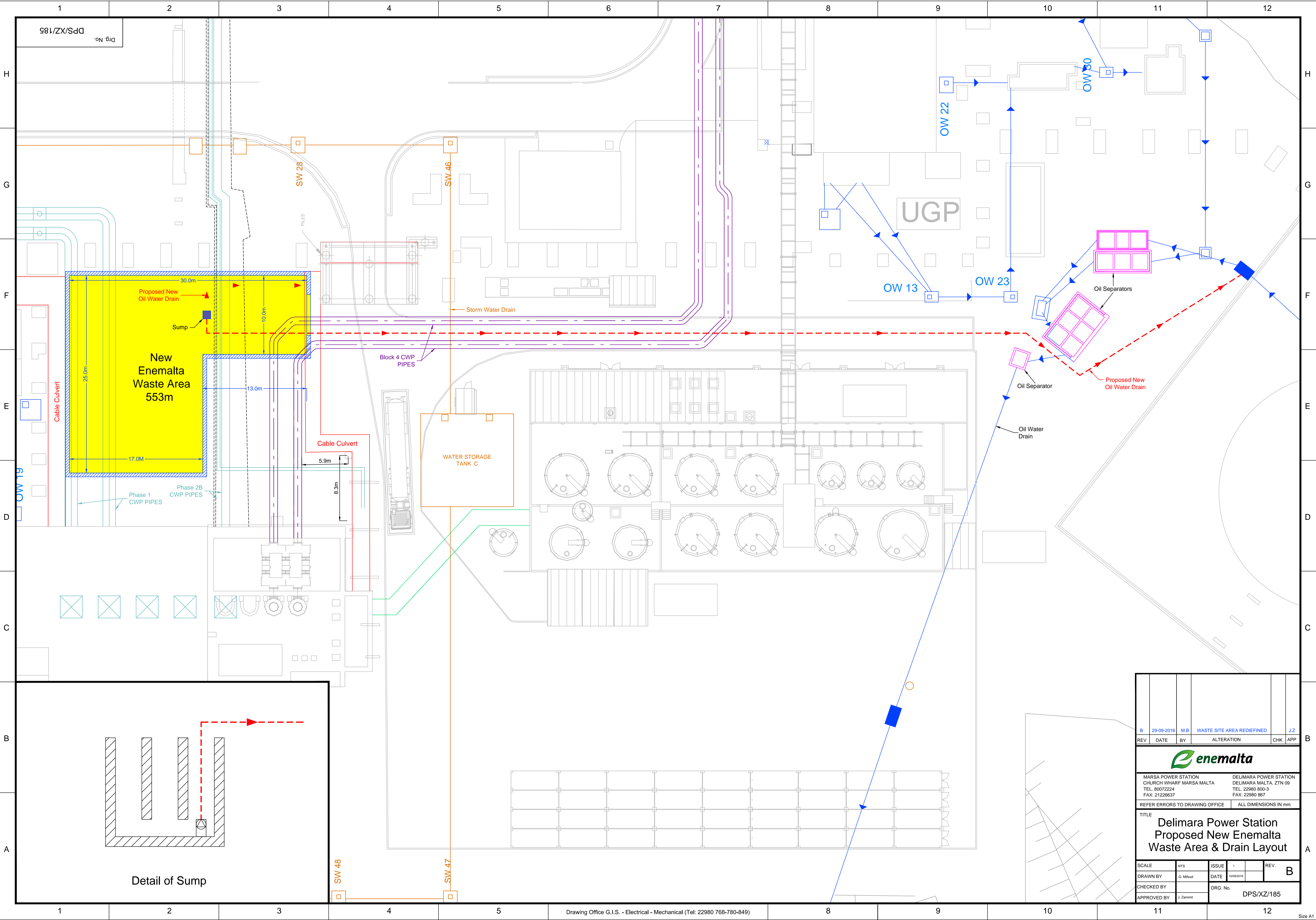
DELMARA POWER STATION
DELMARA MALTA. ZTN 09
TEL: 22980 800-3
FAX: 22980 867


REFER ERRORS TO DRAWING OFFICE

ALL DIMENSIONS IN MM

Delimara Power Station Location of Mechanical & Electrical Tie In Points D4 Plant

REV	DATE	BY	ALTERATION	CHK'D	APP'D	SCALE	NTS	DO NOT SCALE DRAWING				
A	07/10/2016	G.M.	REMOVED WORDING AREA A & AREA B.	J.Z.	J.Z.	DRAWN BY	A.Mangion	ISSUE	1			
						CHECKED BY	D.Sammut	DATE	16/05/2016			
						APPROVED BY	Ing. I. Stafrace	DRG. No.	DPS-XZ-180			
						REVISION	A					



B	29-09-2016	M.B	WASTE SITE AREA REDIEFIED	J.Z	
REV	DATE	BY	ALTERATION	CHK	APP
<div></div>					
MARSJA POWER STATION CHURCH WHARF MARSJA MALTA TEL: 80072224 FAX: 21226637			DELIMARA POWER STATION DELIMARA MALTA. ZTN 09 TEL: 22980 800-3 FAX: 22980 867		
REFER ERRORS TO DRAWING OFFICE			ALL DIMENSIONS IN mm		
TITLE					
Delimara Power Station Proposed New Enemalta Waste Area & Drain Layout					
SCALE	NTS	ISSUE	1	REV.	B
DRAWN BY	G. Mifsud	DATE	10/09/2016		
CHECKED BY		DRG. No.			
APPROVED BY	J. Zammit	DPS/XZ/185			